

PROJECT

GUESTROOM RENOVATION OF HOLIDAY INN EXPRESS & SUITES

CHARLOTTE-CONCORD-I-85

LOCATION #: 8446

InnCODE: CNCNC

CONTACTS

OWNER:
MILESH PATEL
VINTA GROUP
ADDRESS
CITY, STATE ZIP
MILESH.PATEL@VINTAHOTELS.COM
PH: 919.395.2679

DESIGN / FFA PURCHASING:
SARAH LAIRSEY
CARVER & ASSOCIATES
153 WEST ELLIS ROAD, SUITE A
GRIFFIN, GA 30223
SLAIRSEY@CARVERASSOC.COM
PH: 770-233-9799

VICINITY MAP



HOLIDAY INN EXPRESS & SUITES
7772 GATEWAY LANE NW
CONCORD, NC 28027

DESCRIPTION: PIP

SHEET INDEX

ID.T01	TITLE SHEET
ID4.01	ENLARGED GUESTROOM KING (A.1)
ID4.02	ENLARGED GUESTROOM KING (A.2)
ID4.03	ENLARGED GUESTROOM KING ADA (B)
ID4.04	ENLARGED GUESTROOM KING SUITE (C)
ID4.05	ENLARGED GUESTROOM KING ADA SUITE: TUB (D)
ID4.06	ENLARGED GUESTROOM KING LUX SUITE (E)
ID4.07	ENLARGED GUESTROOM KING CONVERSION (J)
ID4.08	ENLARGED GUESTROOM QUEEN/QUEEN CONNECT (G)
ID4.09	ENLARGED GUESTROOM QUEEN/QUEEN (F)
ID4.10	ENLARGED GUESTROOM QUEEN/QUEEN LUX (H)
ID4.11	ENLARGED GUESTROOM QUEEN/QUEEN KITCHENETTE (I)
ID5.01	ELEVATIONS GUESTROOM

GENERAL NOTES

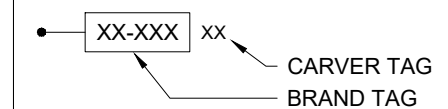
- ALL CONSTRUCTION SHALL COMPLY WITH ALL APPLICABLE LOCAL, STATE AND FEDERAL AUTHORITIES HAVING JURISDICTION, INCLUDING ADA.
- ALL CONSTRUCTION SHALL COMPLY WITH CURRENT HOTEL BRAND STANDARDS.
- CONTRACTOR SHALL PROTECT ALL IN-PLACE CONSTRUCTION, LANDSCAPING, PAVING, UTILITIES, ETC. FROM DAMAGE DURING INTERIOR BUILDOUT / FFE INSTALLATION. ALL DAMAGED CONSTRUCTION TO BE RESTORED TO ORIGINAL CONDITION.
- WHERE EXISTING WALLS, CEILINGS AND FLOORS ARE MODIFIED AND/OR ADDED ON TO; NEW WALLS, CEILINGS, FLOORS AND BASE MUST BE CONSTRUCTED IN A MANNER TO GIVE A SEAMLESS AND COORDINATED APPEARANCE.
- THE DESIGNER HAS RELIED ON LIMITED EXISTING DOCUMENTATION OF THE EXISTING BUILDING FOR THE PREPARATION OF THESE DRAWINGS. THEREFORE THE CONTRACTOR SHALL INVESTIGATE ALL ASPECTS AND SCOPE OF THE PROJECT AND SHALL NOTIFY THE DESIGNER OF ALL CONDITIONS REQUIRING MODIFICATIONS PRIOR TO PROCEEDING WITH WORK, OR SHALL BE RESPONSIBLE FOR ANY DISCREPANCIES BETWEEN THE DESIGN INTENT AND EXISTING CONDITIONS.
- DO NOT SCALE DRAWINGS. USE DIMENSIONS PROVIDED ON DRAWINGS. FOR ALL DIMENSIONS PROVIDED, CONTRACTOR SHALL COORDINATE WITH EXISTING CONDITIONS AS MENTIONED ABOVE.
- ALL DIMENSIONS ARE TO FINISH FACE OF WALL BOARD AND/OR INDICATED MATERIAL U.N.O.
- DIMENSIONS SHOWN ARE FOR REFERENCE AND TO COMMUNICATE CRITICAL AREAS FOR DESIGN INTENT.
- ALL MILLWORK ITEMS SHALL BE SUBMITTED IN SHOP DRAWING FORMAT FOLLOWING MILLWORK CONTRACTORS FIELD VERIFICATION OF DIMENSIONS. CONTRACTOR SHALL SUBMIT (2) COPIES OF MILLWORK AND WOOD SAMPLES TO DESIGNER FOR REVIEW AND APPROVAL.
- ALL PENETRATIONS OF DUCTWORK, CONDUIT, PIPING AND SIMILAR WORK THROUGH FIRE RATED ASSEMBLIES SHALL BE SEALED TO MAINTAIN THE RATING OF THE ASSEMBLY WITH A UL LISTED MATERIAL.
- ALL ELECTRICAL EQUIPMENT INSTALLED IN THE RETURN AIR PLENUM SHALL BE APPROVED BY THE APPROPRIATE GOVERNING AGENCY FOR COMPLIANCE WITH CODE.

KEYS AND LEGENDS

ELECTRICAL SYMBOL LEGEND

- \$ SWITCH
- \$ 3-WAY SWITCH
- \$ FAN SWITCH
- ⊖ SINGLE OUTLET
- ⊖ DUPLEX OUTLET
- ⊖ QUAD OUTLET
- ⊖ GFI DUPLEX OUTLET
- ⊖ GFI QUAD OUTLET
- ⊖ FLOOR DUPLEX OUTLET
- ⊖ FLOOR QUAD OUTLET
- ⊖ JUNCTION BOX
- ⊖ THERMOSTAT
- ∇ DATA JACK
- ∇ FLOOR DATA JACK
- ∇ TELEPHONE AND DATA JACK
- ∇ FLOOR TELEPHONE AND DATA JACK
- ∇ TV OUTLET
- ∇ FLOOR TV OUTLET
- ∇ WIRELESS ACCESS POINT

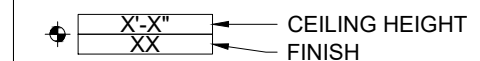
FURNITURE KEY



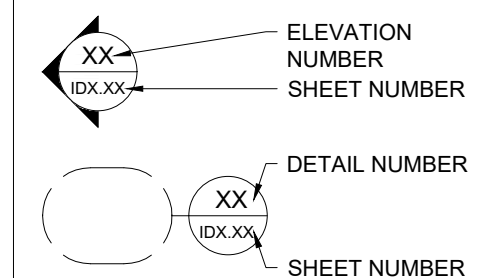
FINISH KEY

W	WALL
B	BASE
F	FLOOR

REFLECTED CEILING KEY



SYMBOL LEGEND



CARVER & ASSOCIATES
HOSPITALITY CONTRACT SERVICES
153 WEST ELLIS ROAD
GRIFFIN, GEORGIA 30223
770.233.9799
CARVERASSOC.COM

HOLIDAY INN EXPRESS & SUITES
CHARLOTTE-CONCORD I-85
7772 GATEWAY LANE NW, CONCORD, NC 28027
InnCODE: CNCNC

DRAWN BY: SL

DATE: 03.27.26

REV. 1 DATE: --

REV. 2 DATE: --

REV. 3 DATE: --

REV. 4 DATE: --

SHEET TITLE:

TITLE SHEET

SHEET NO.:

ID.T01

PHASE: BRAND SUBMITTAL



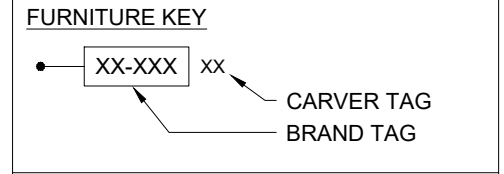
CARVER & ASSOCIATES
 HOSPITALITY CONTRACT SERVICES
 153 WEST ELLIS ROAD
 GRIFFIN, GEORGIA 30223
 770.233.9799
 CARVERASSOC.COM

PROJECT:
 HOLIDAY INN EXPRESS
 & SUITES
 CHARLOTTE-CONCORD I-85
 7772 GATEWAY LANE NW, CONCORD, NC 28027
 InnCODE: CNCNC

DRAWN BY: SL
DATE: 03.27.26
REV. 1 DATE: --
REV. 2 DATE: --
REV. 3 DATE: --
REV. 4 DATE: --

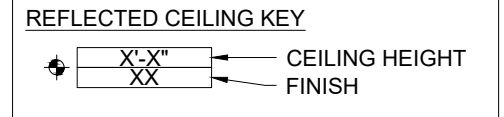
SHEET TITLE:
 ENLARGED
 GUESTROOM
 KING
 (A.1)

SHEET NO.:
 ID4.01
PHASE:
 BRAND SUBMITTAL



FINISH KEY

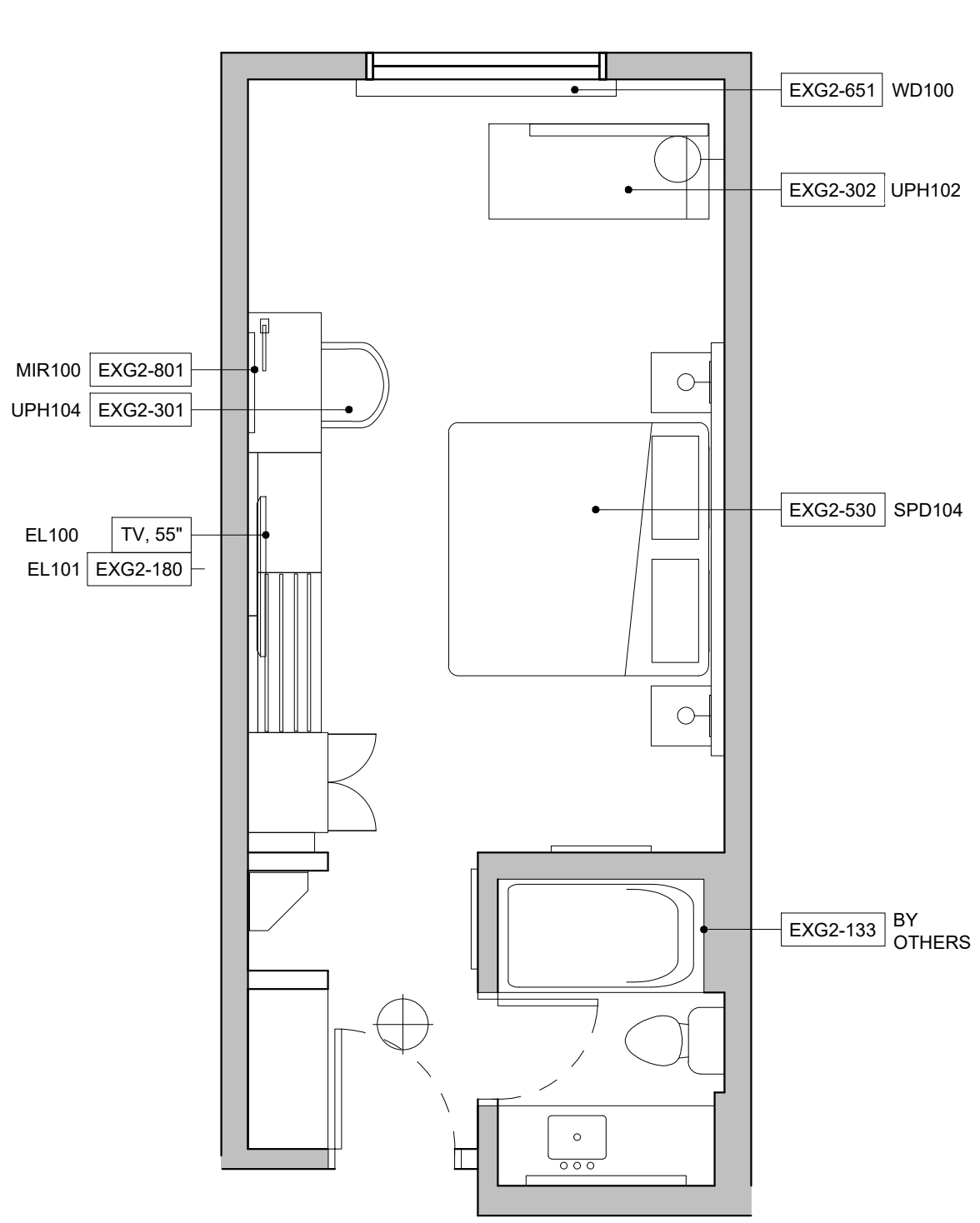
W	WALL
B	BASE
F	FLOOR



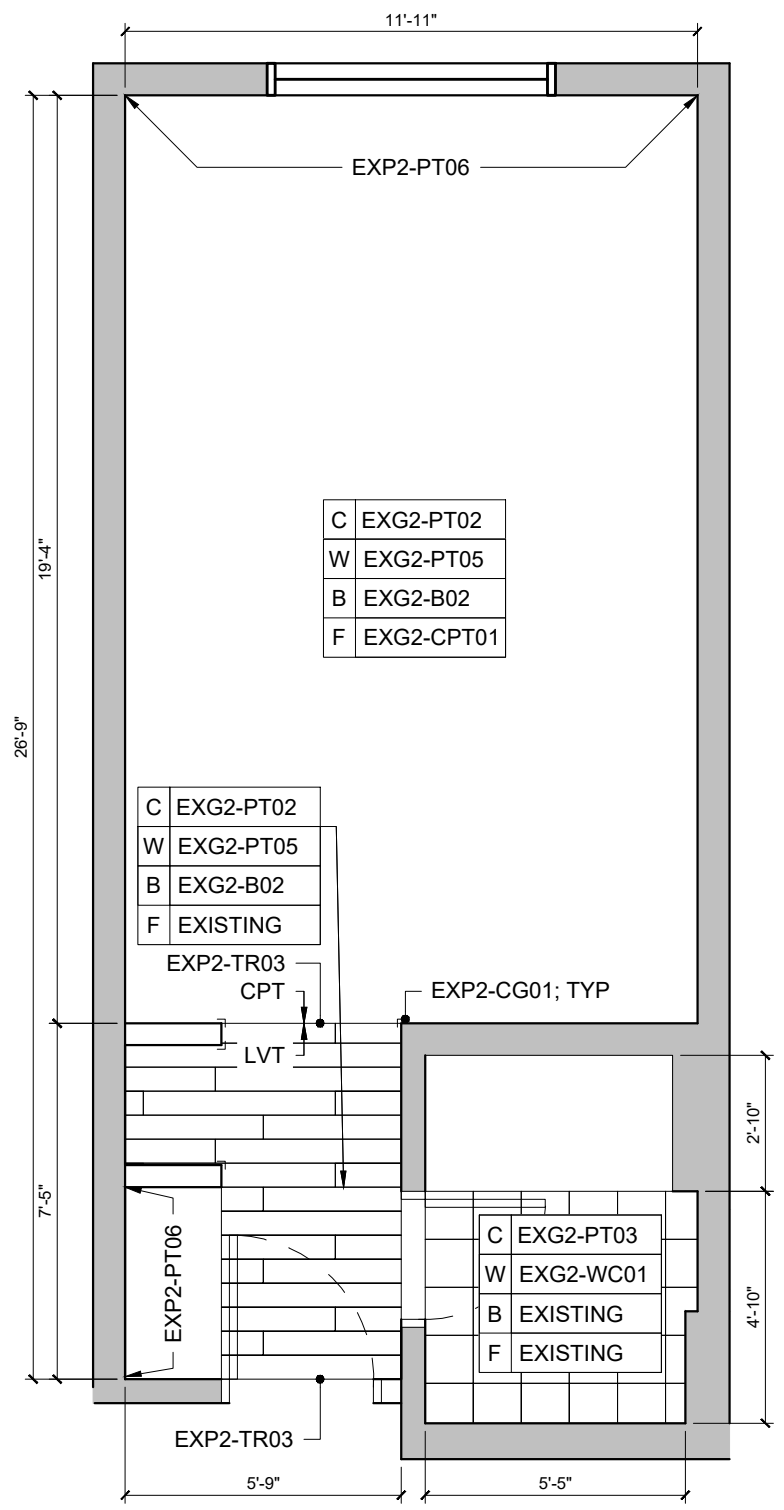
- GENERAL NOTES:**
- REFINISH ENTRY DOOR FRAME TO MATCH: EXP2-PT30
 - REFINISH INTERIOR DOOR FRAMES TO MATCH: EXG2-PT01
 - REPLACE ANY DAMAGED OR DISCOLORED LAMP SHADES WITH EXG2-451.1

ROOM NUMBERS

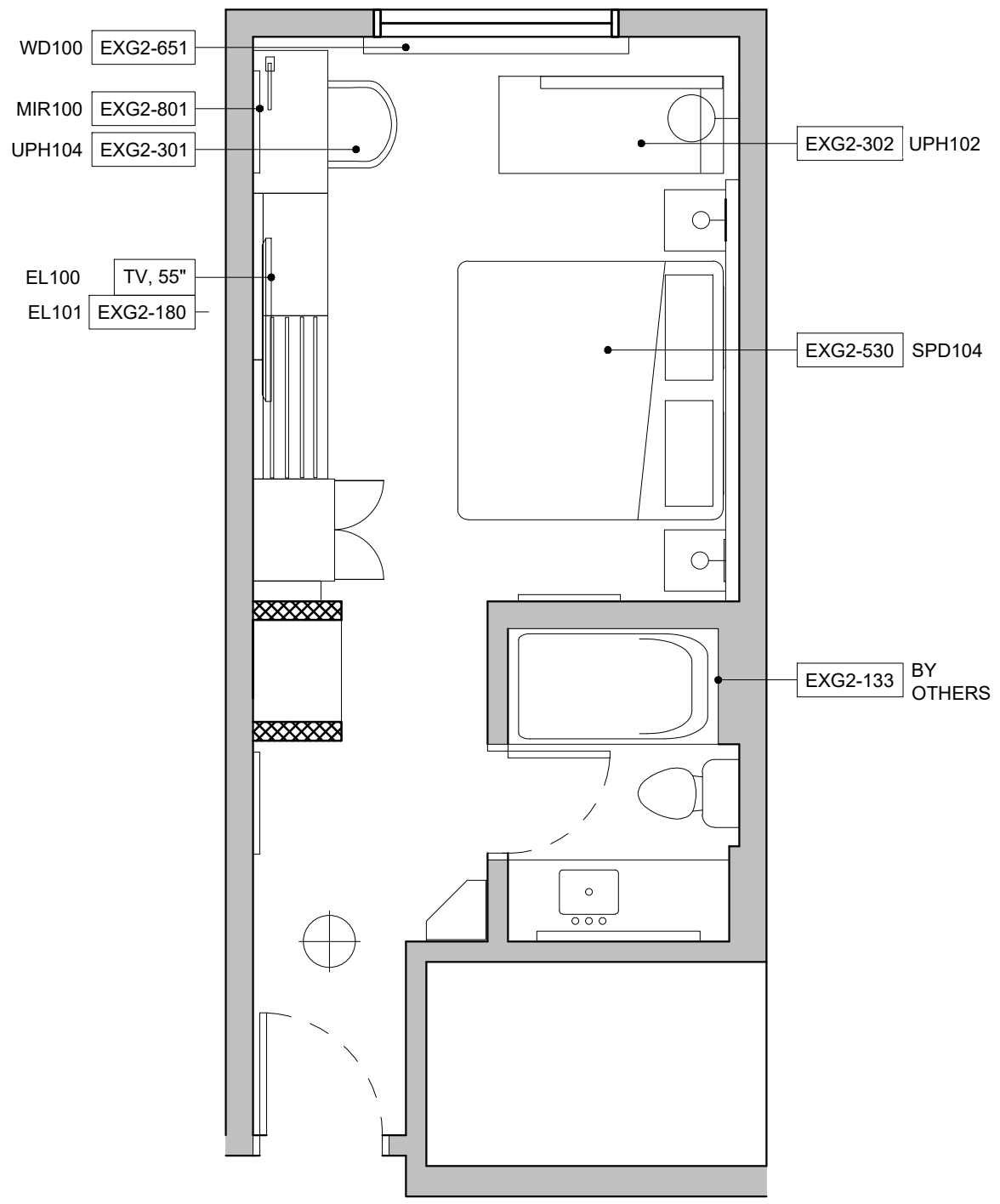
LEFT-HAND	RIGHT-HAND
216	-
316	-
416	-
3 TOTAL	0 TOTAL
3 TOTAL	



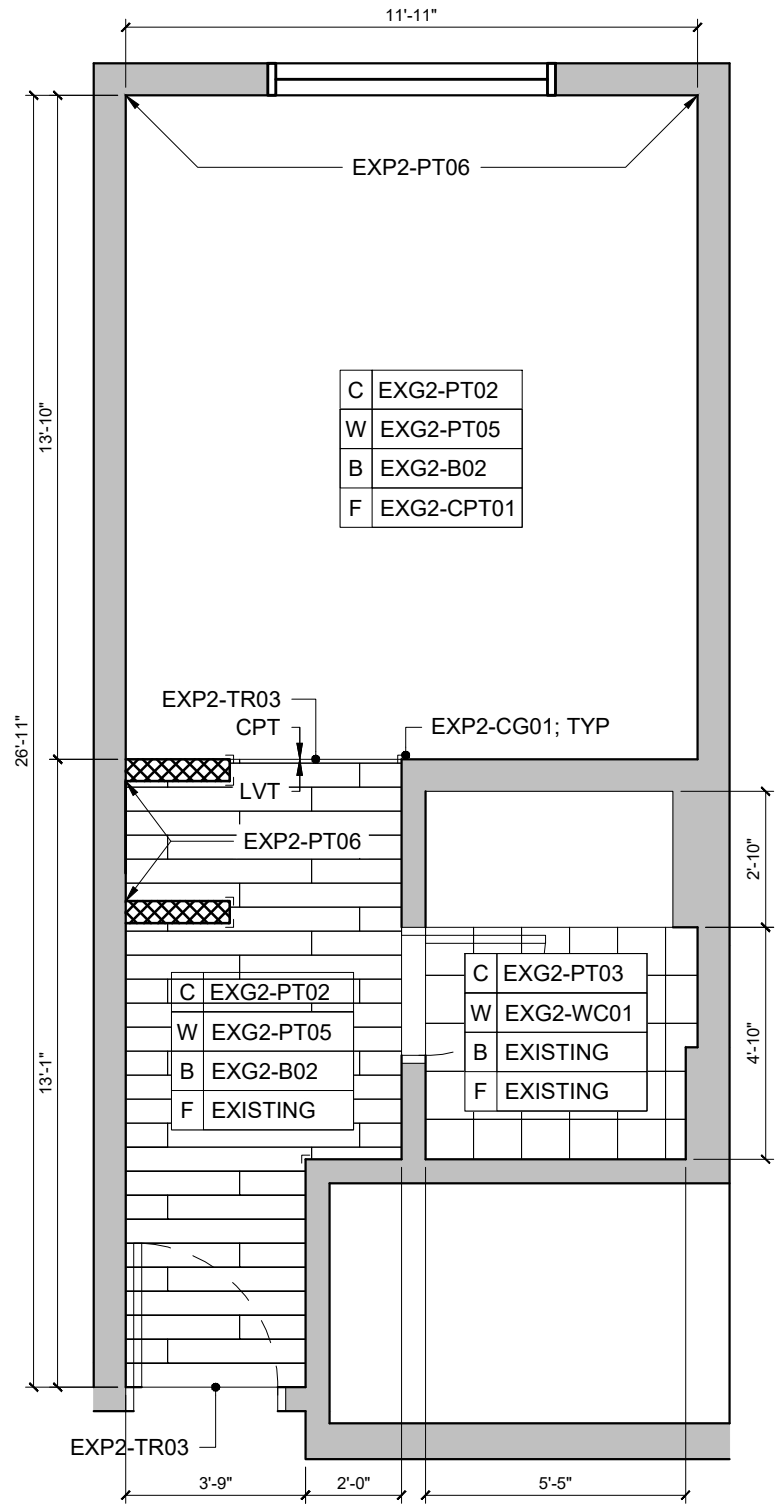
01 FURNITURE PLAN: KING - A.1
 SCALE: 1/4" = 1' - 0"
 LEFT HAND SHOWN;
 RIGHT HAND OPPOSITE



02 FINISH PLAN: KING - A.1
 SCALE: 1/4" = 1' - 0"



01 FURNITURE PLAN: KING - A.2
 SCALE: 1/4" = 1' - 0"
 LEFT HAND SHOWN;
 RIGHT HAND OPPOSITE



02 FINISH PLAN: KING - A.2
 SCALE: 1/4" = 1' - 0"

FURNITURE KEY

XX-XXX XX
 CARVER TAG
 BRAND TAG

FINISH KEY

W	WALL
B	BASE
F	FLOOR

REFLECTED CEILING KEY

X'-X" CEILING HEIGHT
 XX FINISH

- GENERAL NOTES:**
- REFINISH ENTRY DOOR FRAME TO MATCH: EXP2-PT30
 - REFINISH INTERIOR DOOR FRAMES TO MATCH: EXG2-PT01
 - REPLACE ANY DAMAGED OR DISCOLORED LAMP SHADES WITH EXG2-451.1

ROOM NUMBERS

LEFT-HAND	RIGHT-HAND
411	-
1 TOTAL	0 TOTAL
1 TOTAL	



CARVER & ASSOCIATES
 HOSPITALITY CONTRACT SERVICES
 153 WEST ELLIS ROAD
 GRIFFIN, GEORGIA 30223
 770.233.9799
 CARVERASSOC.COM

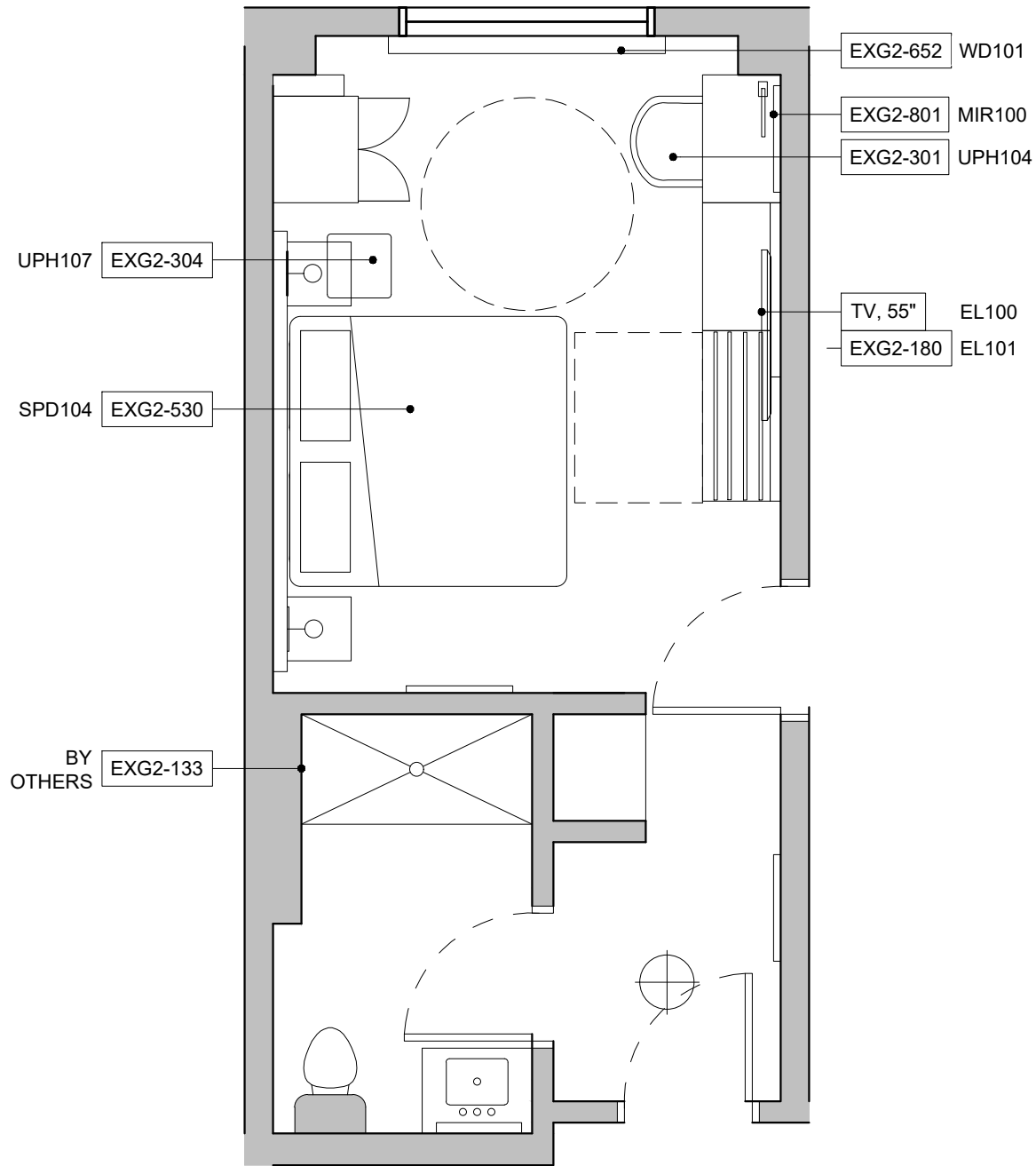
PROJECT:
 HOLIDAY INN EXPRESS
 & SUITES
 CHARLOTTE-CONCORD I-85
 7772 GATEWAY LANE NW, CONCORD, NC 28027
 InnCODE: CNCNC

DRAWN BY: SL
DATE: 03.27.26
REV. 1 DATE: --
REV. 2 DATE: --
REV. 3 DATE: --
REV. 4 DATE: --

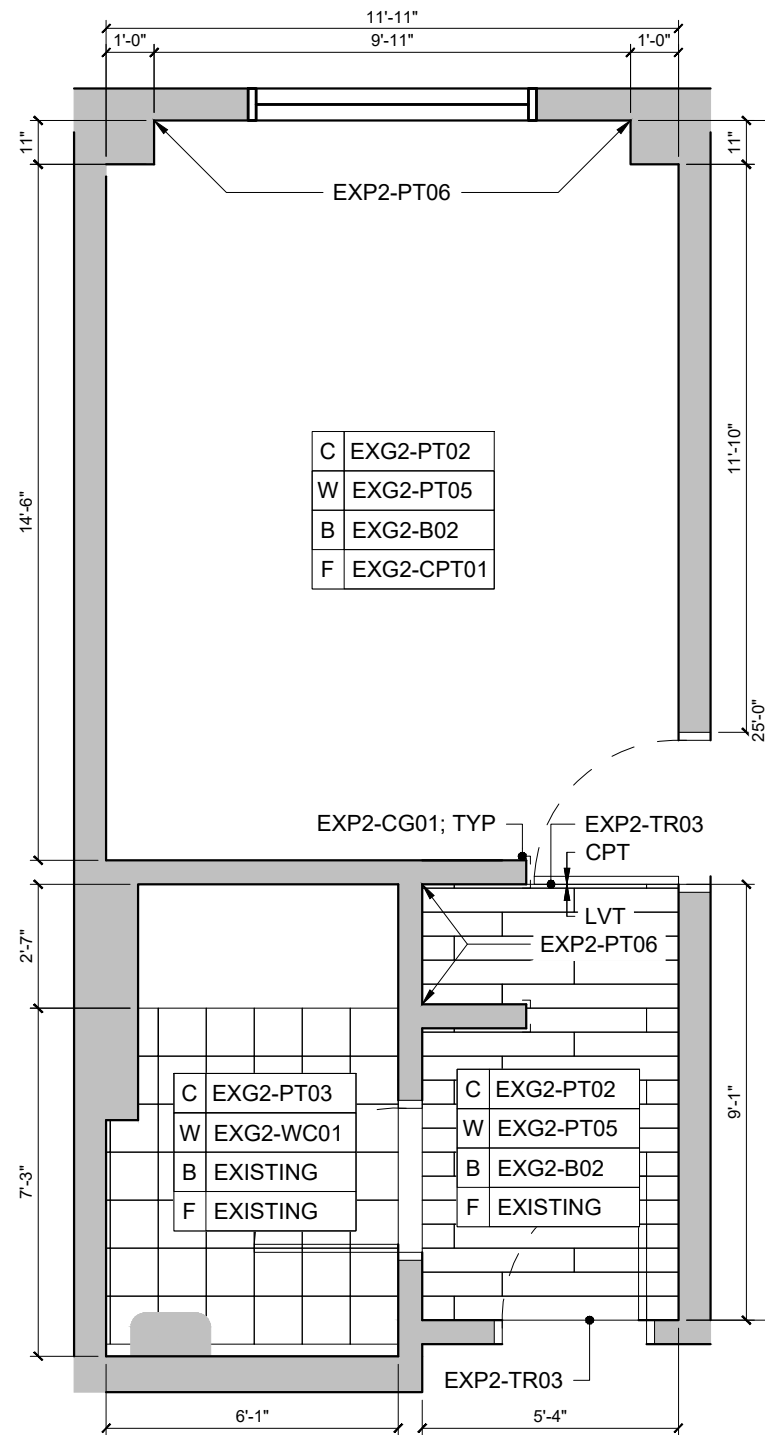
SHEET TITLE:
 ENLARGED
 GUESTROOM
 KING
 (A.2)

SHEET NO.:
 ID4.02

PHASE:
 BRAND SUBMITTAL

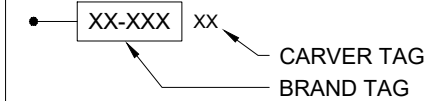


01 FURNITURE PLAN: KING ADA - B
 SCALE: 1/4" = 1' - 0"
 RIGHT HAND SHOWN;
 LEFT HAND OPPOSITE



02 FINISH PLAN: KING ADA - B
 SCALE: 1/4" = 1' - 0"

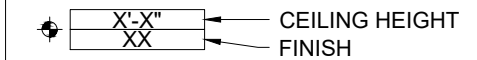
FURNITURE KEY



FINISH KEY

W	WALL
B	BASE
F	FLOOR

REFLECTED CEILING KEY



GENERAL NOTES:

1. REFINISH ENTRY DOOR FRAME TO MATCH: EXP2-PT30
2. REFINISH INTERIOR DOOR FRAMES TO MATCH: EXP2-PT01
3. REPLACE ANY DAMAGED OR DISCOLORED LAMP SHADES WITH EXG2-451.1

ROOM NUMBERS	
LEFT-HAND	RIGHT-HAND
-	118
-	218
-	318
-	418
0 TOTAL	4 TOTAL
4 TOTAL	



CARVER & ASSOCIATES
 HOSPITALITY CONTRACT SERVICES
 153 WEST ELLIS ROAD
 GRIFFIN, GEORGIA 30223
 770.233.9799
 CARVERASSOC.COM

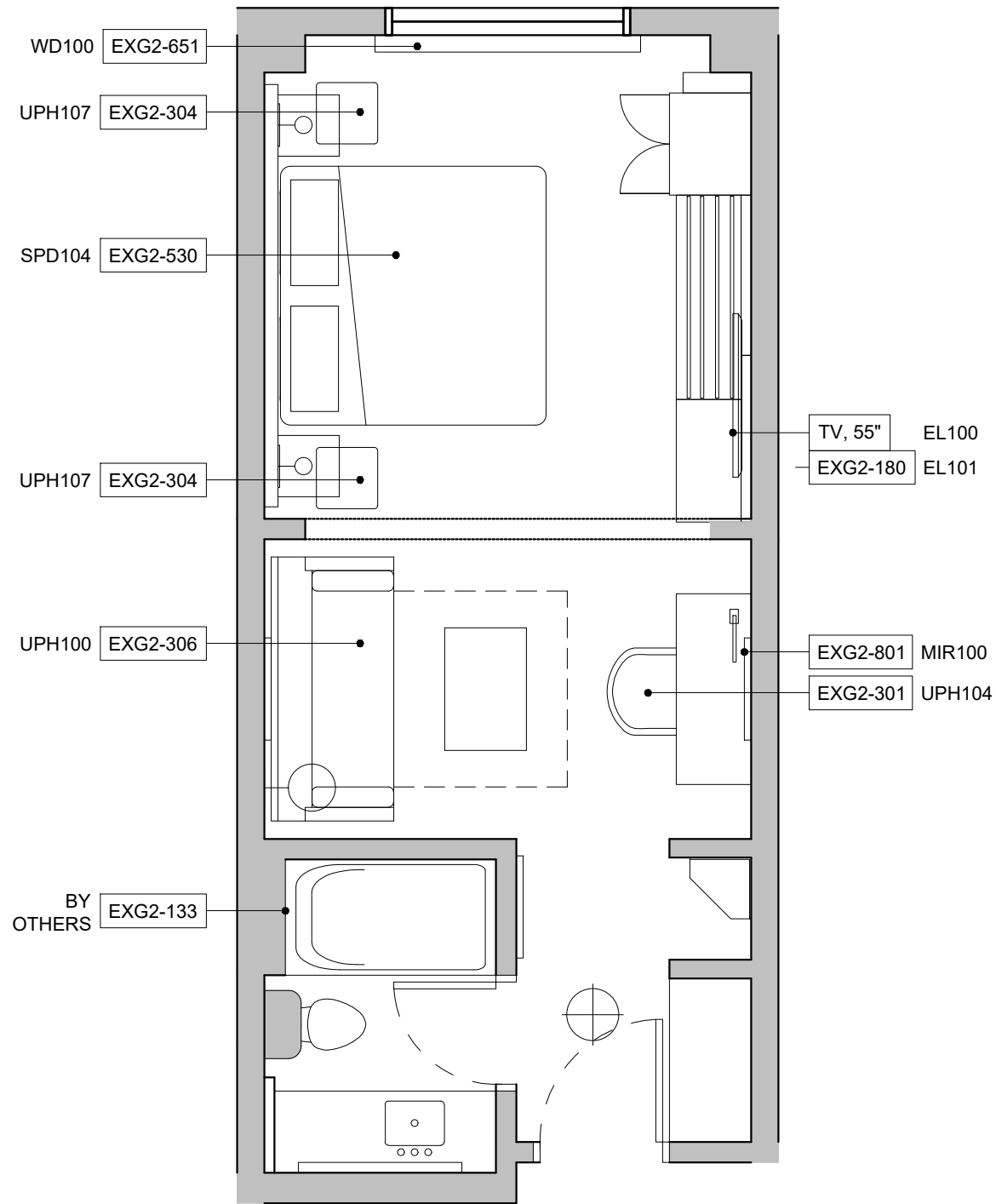
PROJECT:
**HOLIDAY INN EXPRESS
 & SUITES**
CHARLOTTE-CONCORD I-85
 7772 GATEWAY LANE NW, CONCORD, NC 28027
 InnCODE: CNCNC

DRAWN BY: SL
 DATE: 03.27.26
 REV. 1 DATE: --
 REV. 2 DATE: --
 REV. 3 DATE: --
 REV. 4 DATE: --
 SHEET TITLE:

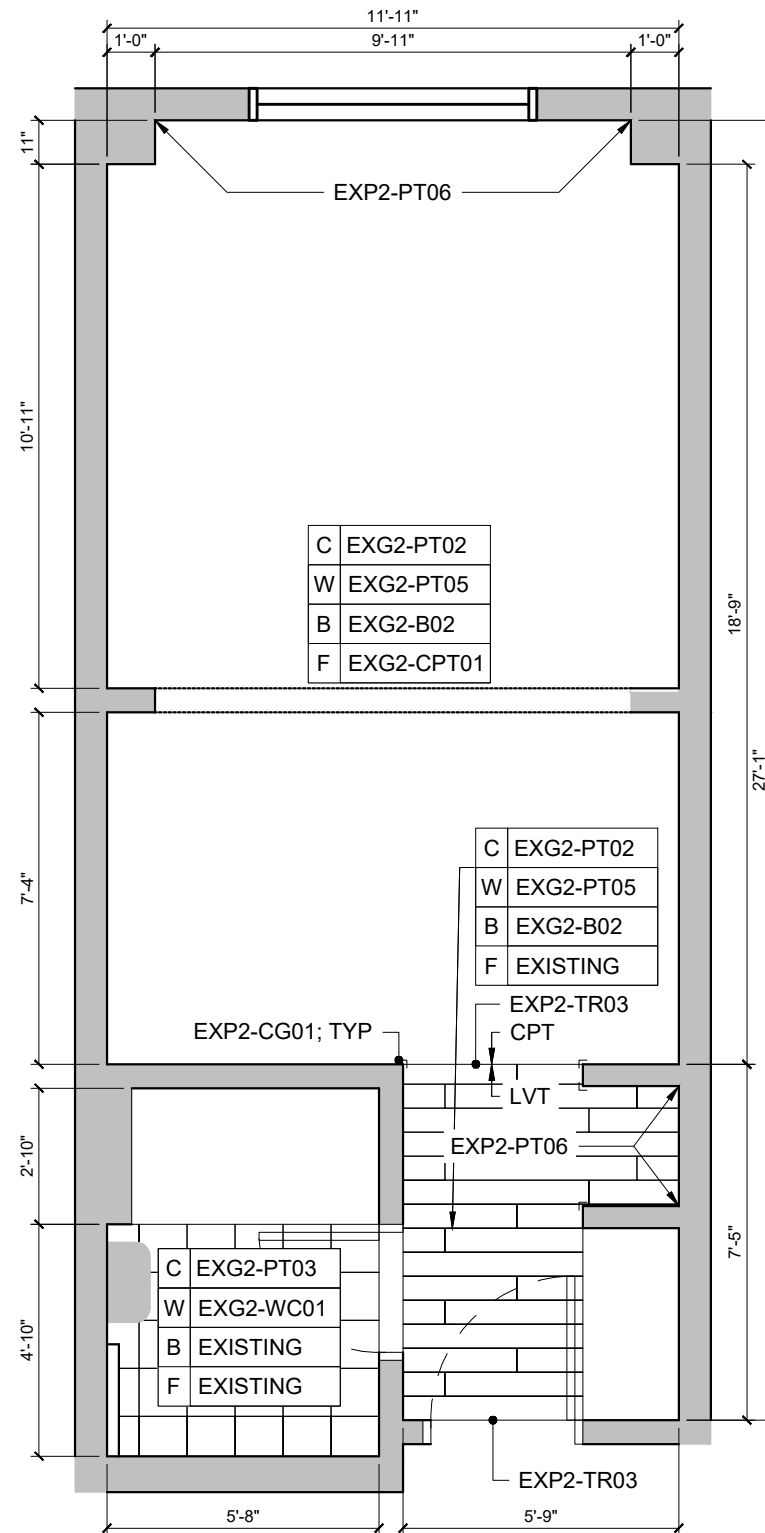
**ENLARGED
 GUESTROOM**
**KING ADA
 (B)**

SHEET NO.:
ID4.03

PHASE:
 BRAND SUBMITTAL

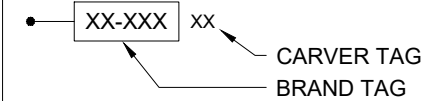


01 FURNITURE PLAN: KING SUITE - C
 SCALE: 1/4" = 1' - 0"
 RIGHT HAND SHOWN;
 LEFT HAND OPPOSITE



02 FINISH PLAN: KING SUITE - C
 SCALE: 1/4" = 1' - 0"

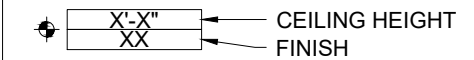
FURNITURE KEY



FINISH KEY

W	WALL
B	BASE
F	FLOOR

REFLECTED CEILING KEY



GENERAL NOTES:

1. REFINISH ENTRY DOOR FRAME TO MATCH: EXP2-PT30
2. REFINISH INTERIOR DOOR FRAMES TO MATCH: EXG2-PT01
3. REPLACE ANY DAMAGED OR DISCOLORED LAMP SHADES WITH EXG2-451.1

ROOM NUMBERS

LEFT-HAND	RIGHT-HAND
219	117
223	201
319	209
323	213
419	217
423	221
	301
	308
	313
	317
	321
	401
	409
	413
	417
	421
6 TOTAL	16 TOTAL
22 TOTAL	



CARVER & ASSOCIATES
 HOSPITALITY CONTRACT SERVICES
 153 WEST ELLIS ROAD
 GRIFFIN, GEORGIA 30223
 770.233.9799
 CARVERASSOC.COM

PROJECT:
**HOLIDAY INN EXPRESS
 & SUITES**
CHARLOTTE-CONCORD I-85
 7772 GATEWAY LANE NW, CONCORD, NC 28027
 InnCODE: CNCNC

DRAWN BY: SL

DATE: 03.27.26

REV. 1 DATE: --

REV. 2 DATE: --

REV. 3 DATE: --

REV. 4 DATE: --

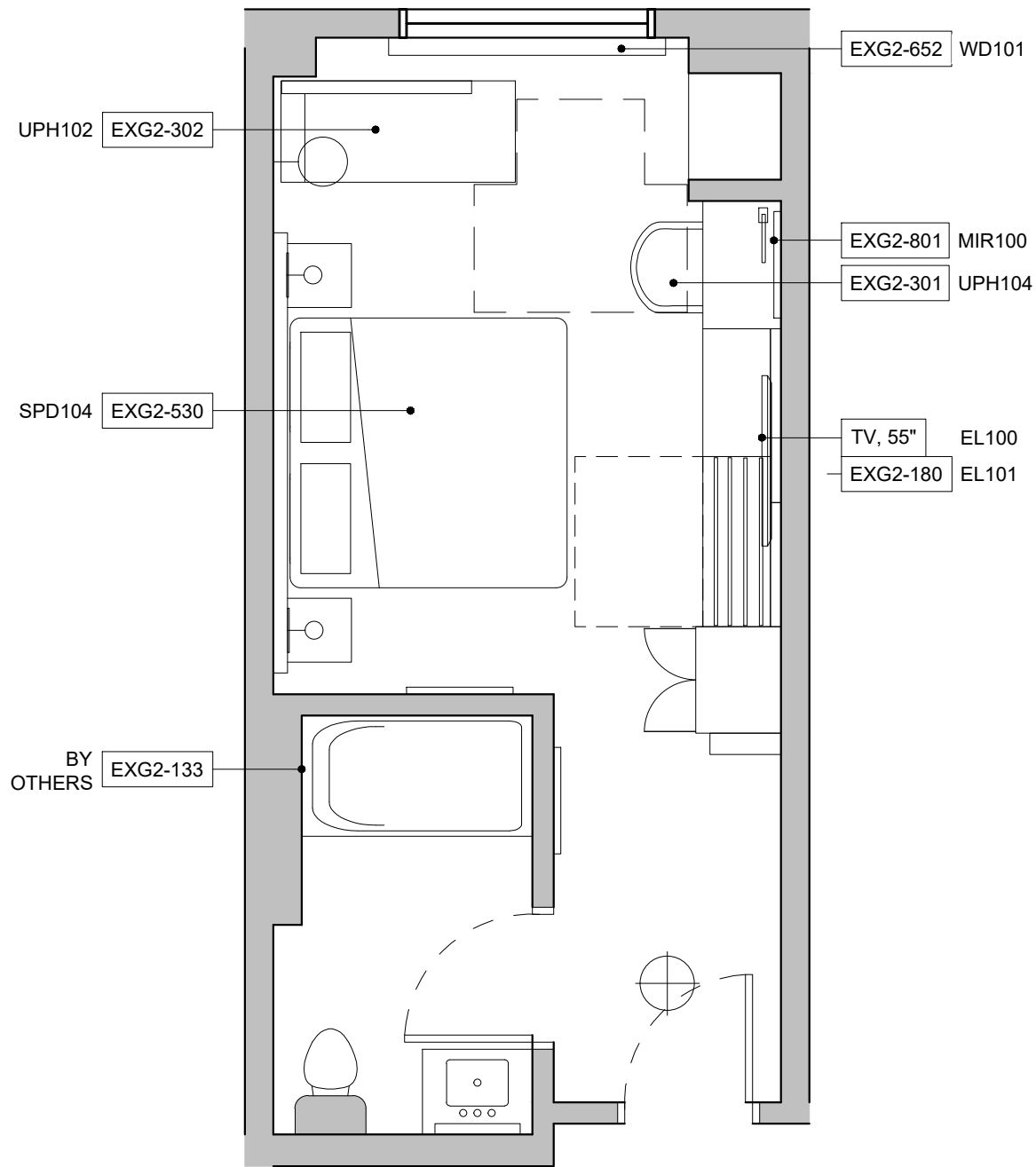
SHEET TITLE:

**ENLARGED
 GUESTROOM
 KING SUITE
 (C)**

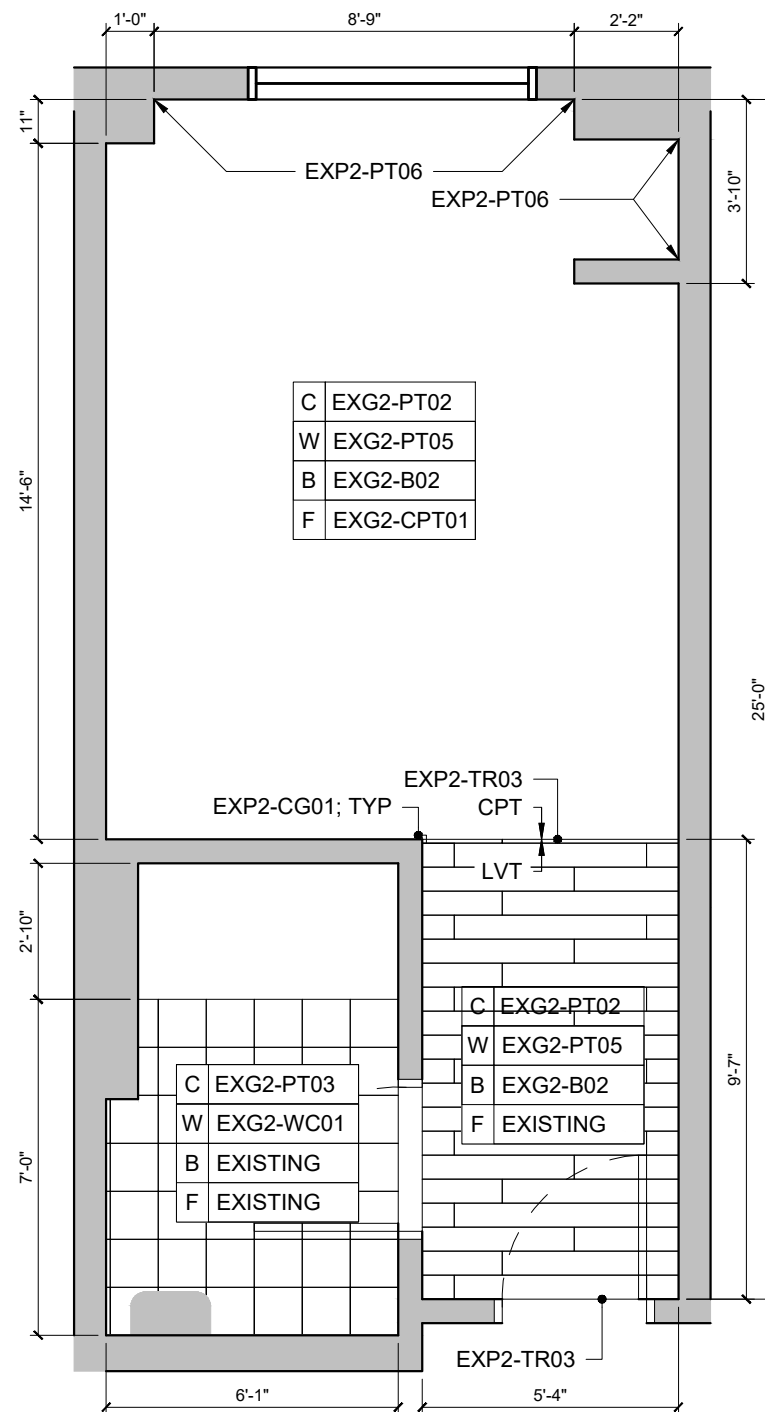
SHEET NO.:

ID4.04

PHASE:
 BRAND SUBMITTAL

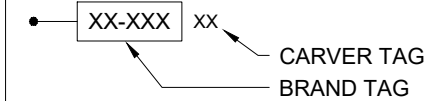


01 FURNITURE PLAN: KING ADA SUITE - D
 SCALE: 1/4" = 1' - 0"
 RIGHT HAND SHOWN;
 LEFT HAND OPPOSITE



02 FINISH PLAN: KING ADA SUITE - D
 SCALE: 1/4" = 1' - 0"

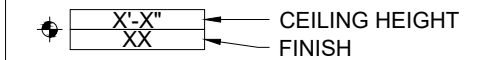
FURNITURE KEY



FINISH KEY

W	WALL
B	BASE
F	FLOOR

REFLECTED CEILING KEY



GENERAL NOTES:

1. REFINISH ENTRY DOOR FRAME TO MATCH: EXP2-PT30
2. REFINISH INTERIOR DOOR FRAMES TO MATCH: EXG2-PT01
3. REPLACE ANY DAMAGED OR DISCOLORED LAMP SHADES WITH EXG2-451.1

ROOM NUMBERS

LEFT-HAND	RIGHT-HAND
-	122
0 TOTAL	1 TOTAL
1 TOTAL	



CARVER & ASSOCIATES
 HOSPITALITY CONTRACT SERVICES
 153 WEST ELLIS ROAD
 GRIFFIN, GEORGIA 30223
 770.233.9799
 CARVERASSOC.COM

PROJECT:
**HOLIDAY INN EXPRESS
 & SUITES**
CHARLOTTE-CONCORD I-85
 7772 GATEWAY LANE NW, CONCORD, NC 28027
 InnCODE: CNCNC

DRAWN BY: SL

DATE: 03.27.26

REV. 1 DATE: --

REV. 2 DATE: --

REV. 3 DATE: --

REV. 4 DATE: --

SHEET TITLE:

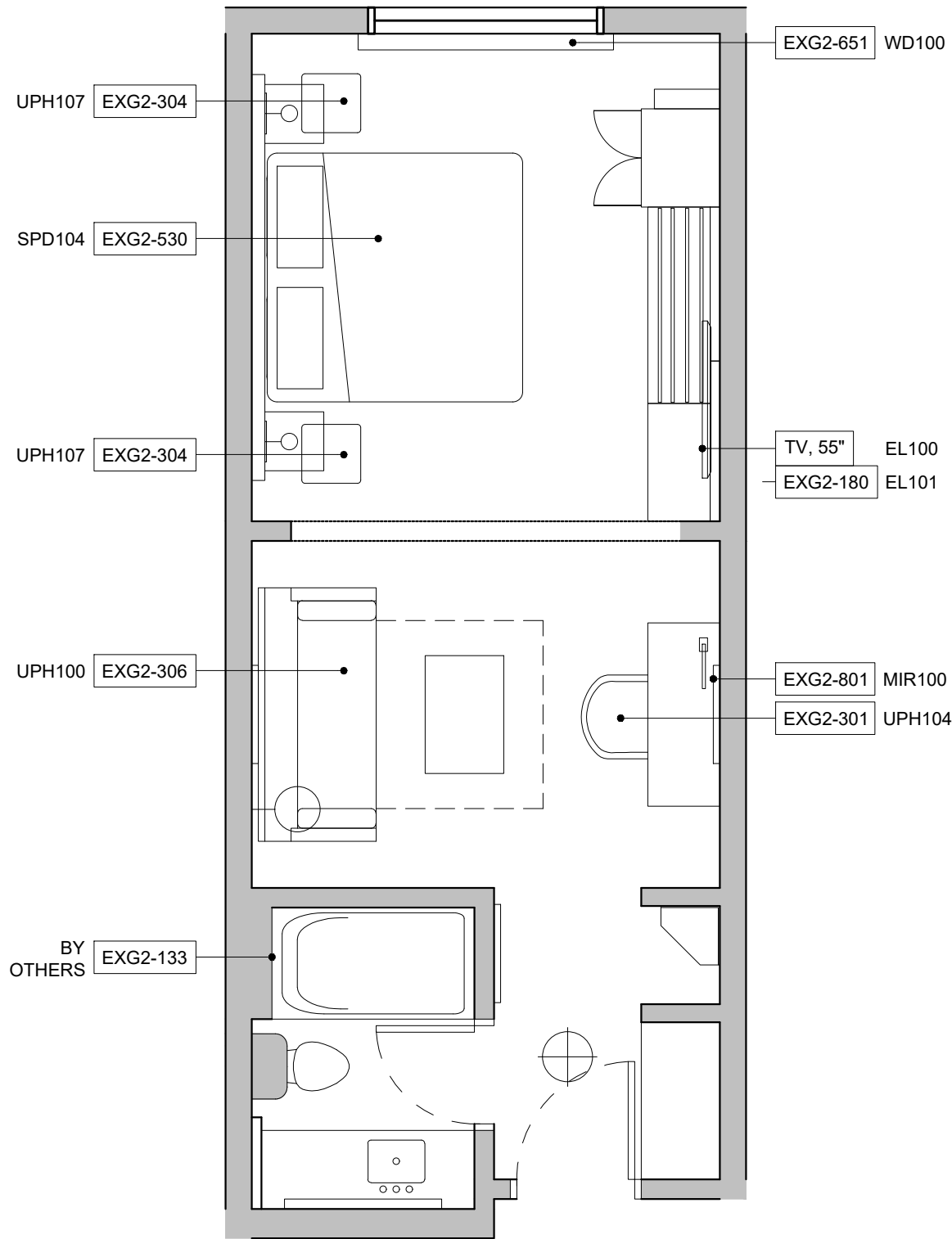
**ENLARGED
 GUESTROOM**

**KING ADA
 SUITE: TUB
 (D)**

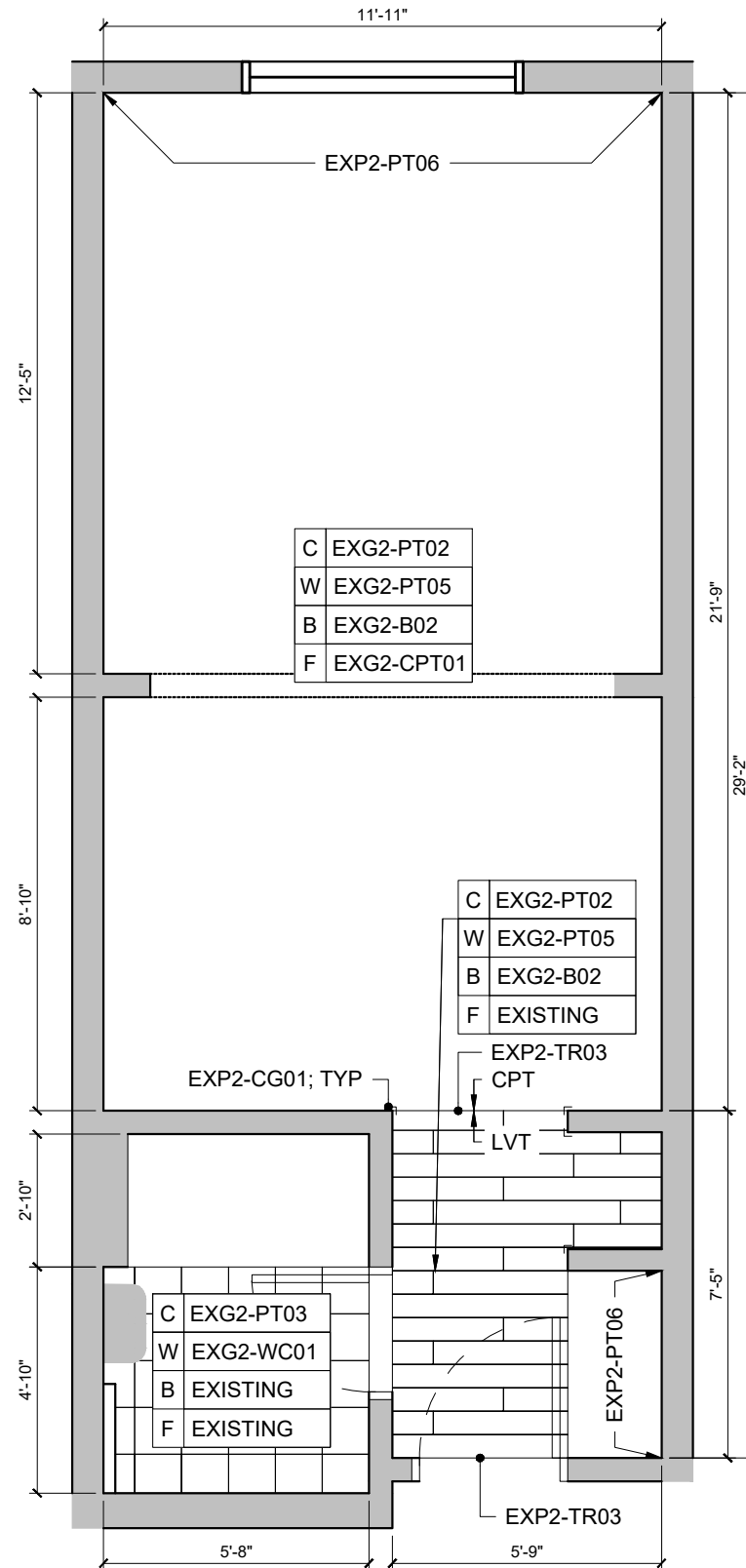
SHEET NO.:

ID4.05

PHASE:
 BRAND SUBMITTAL

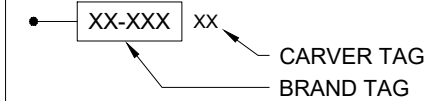


01 FURNITURE PLAN: KING LUX SUITE - E
 SCALE: 1/4" = 1' - 0"
 RIGHT HAND SHOWN;
 LEFT HAND OPPOSITE



02 FINISH PLAN: KING LUX SUITE - E
 SCALE: 1/4" = 1' - 0"

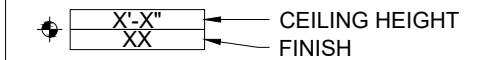
FURNITURE KEY



FINISH KEY

W	WALL
B	BASE
F	FLOOR

REFLECTED CEILING KEY



GENERAL NOTES:

1. REFINISH ENTRY DOOR FRAME TO MATCH: EXP2-PT30
2. REFINISH INTERIOR DOOR FRAMES TO MATCH: EXG2-PT01
3. REPLACE ANY DAMAGED OR DISCOLORED LAMP SHADES WITH EXG2-451.1

ROOM NUMBERS

LEFT-HAND	RIGHT-HAND
203	205
207	305
303	405
307	
403	
407	
6 TOTAL	3 TOTAL
9 TOTAL	



CARVER & ASSOCIATES
 HOSPITALITY CONTRACT SERVICES
 153 WEST ELLIS ROAD
 GRIFFIN, GEORGIA 30223
 770.233.9799
 CARVERASSOC.COM

PROJECT:
**HOLIDAY INN EXPRESS
 & SUITES**
CHARLOTTE-CONCORD I-85
 7772 GATEWAY LANE NW, CONCORD, NC 28027
 InnCODE: CNCNC

DRAWN BY: SL

DATE: 03.27.26

REV. 1 DATE: --

REV. 2 DATE: --

REV. 3 DATE: --

REV. 4 DATE: --

SHEET TITLE:

**ENLARGED
 GUESTROOM**

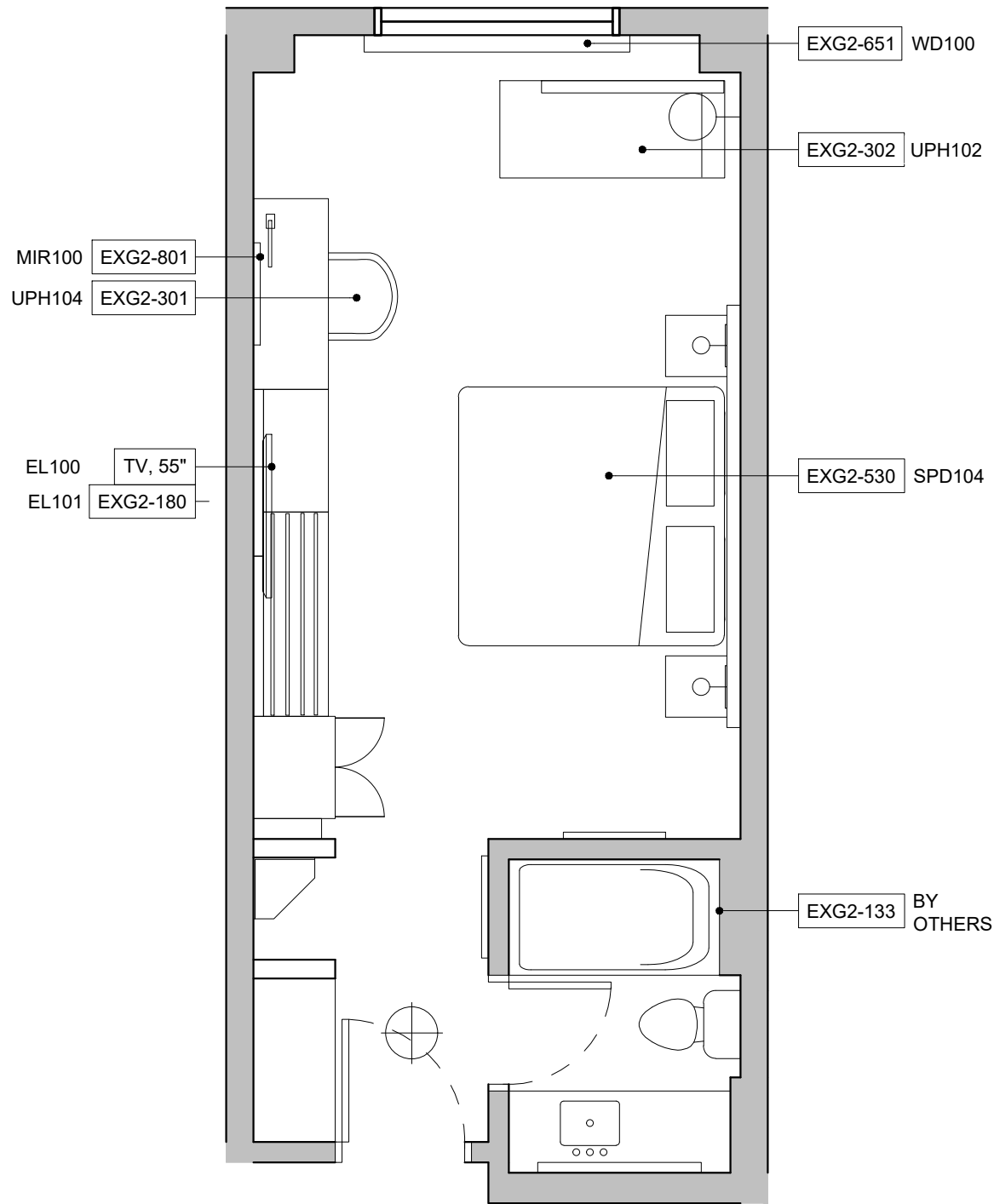
**KING LUX
 SUITE
 (E)**

SHEET NO.:

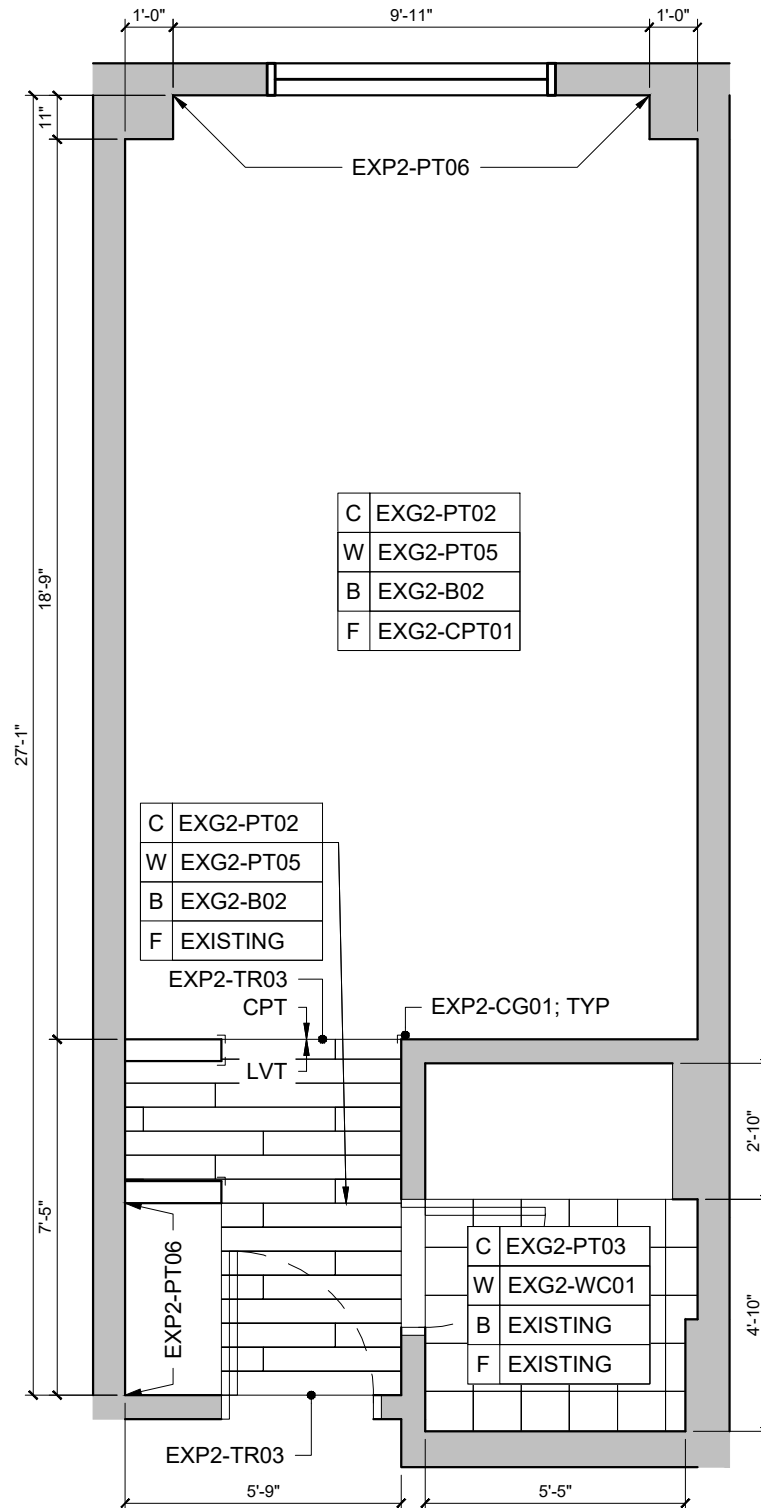
ID4.06

PHASE:

BRAND SUBMITTAL

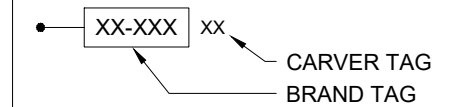


01 FURNITURE PLAN: KING CONV. - J
 SCALE: 1/4" = 1' - 0"
 LEFT HAND SHOWN;
 RIGHT HAND OPPOSITE



02 FINISH PLAN: KING CONV. - J
 SCALE: 1/4" = 1' - 0"

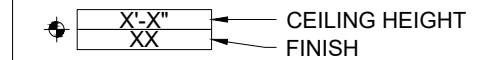
FURNITURE KEY



FINISH KEY

W	WALL
B	BASE
F	FLOOR

REFLECTED CEILING KEY



GENERAL NOTES:

1. REFINISH ENTRY DOOR FRAME TO MATCH: EXP2-PT30
2. REFINISH INTERIOR DOOR FRAMES TO MATCH: EXP2-PT01
3. REPLACE ANY DAMAGED OR DISCOLORED LAMP SHADES WITH EXG2-451.1

ROOM NUMBERS	
LEFT-HAND	RIGHT-HAND
123	-
1 TOTAL	0 TOTAL
1 TOTAL	



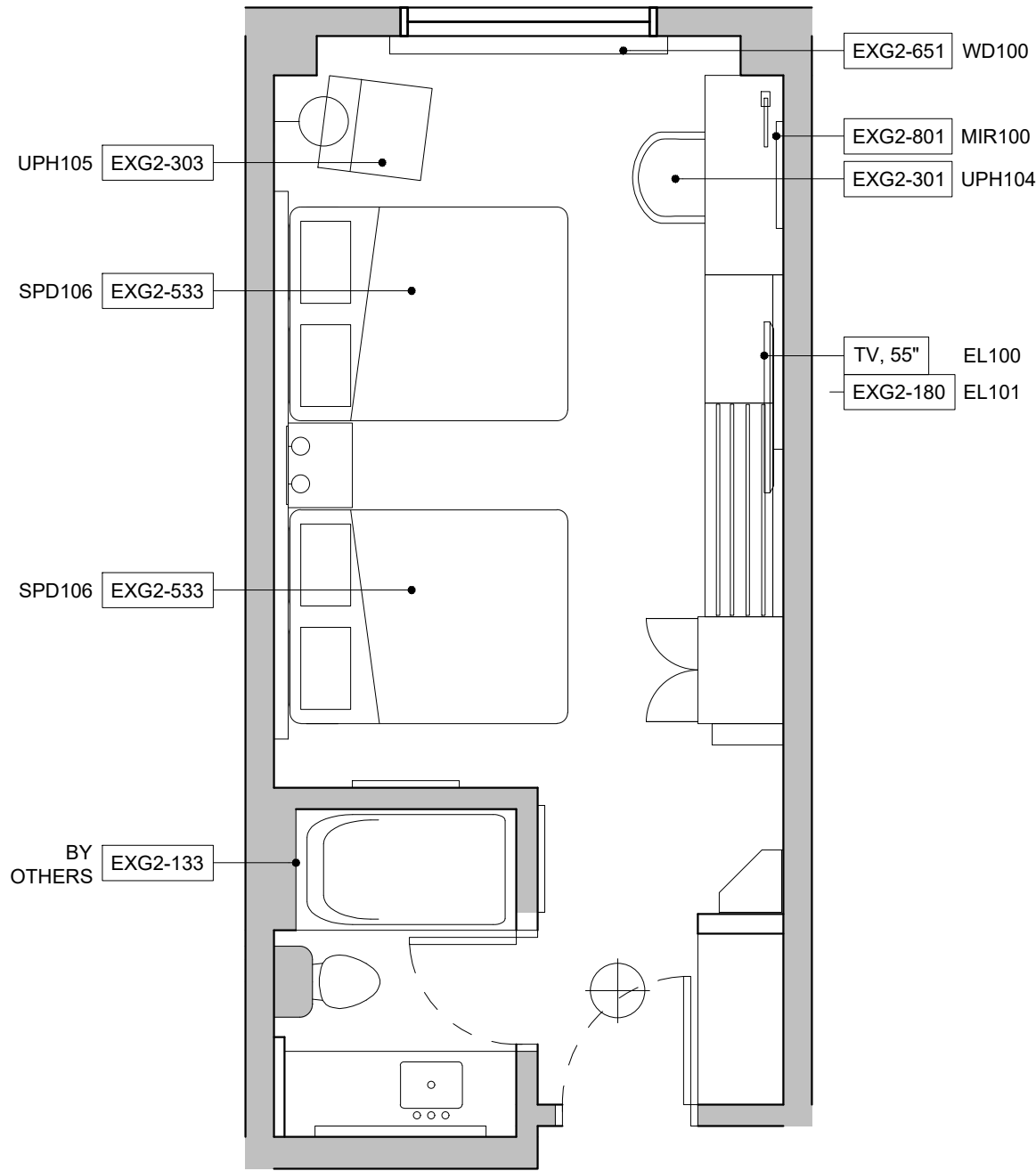
CARVER & ASSOCIATES
 HOSPITALITY CONTRACT SERVICES
 153 WEST ELLIS ROAD
 GRIFFIN, GEORGIA 30223
 770.233.9799
 CARVERASSOC.COM

PROJECT: HOLIDAY INN EXPRESS & SUITES
 CHARLOTTE-CONCORD I-85
 7772 GATEWAY LANE NW, CONCORD, NC 28027
 InnCODE: CNCNC

DRAWN BY: SL
 DATE: 03.27.26
 REV. 1 DATE: --
 REV. 2 DATE: --
 REV. 3 DATE: --
 REV. 4 DATE: --

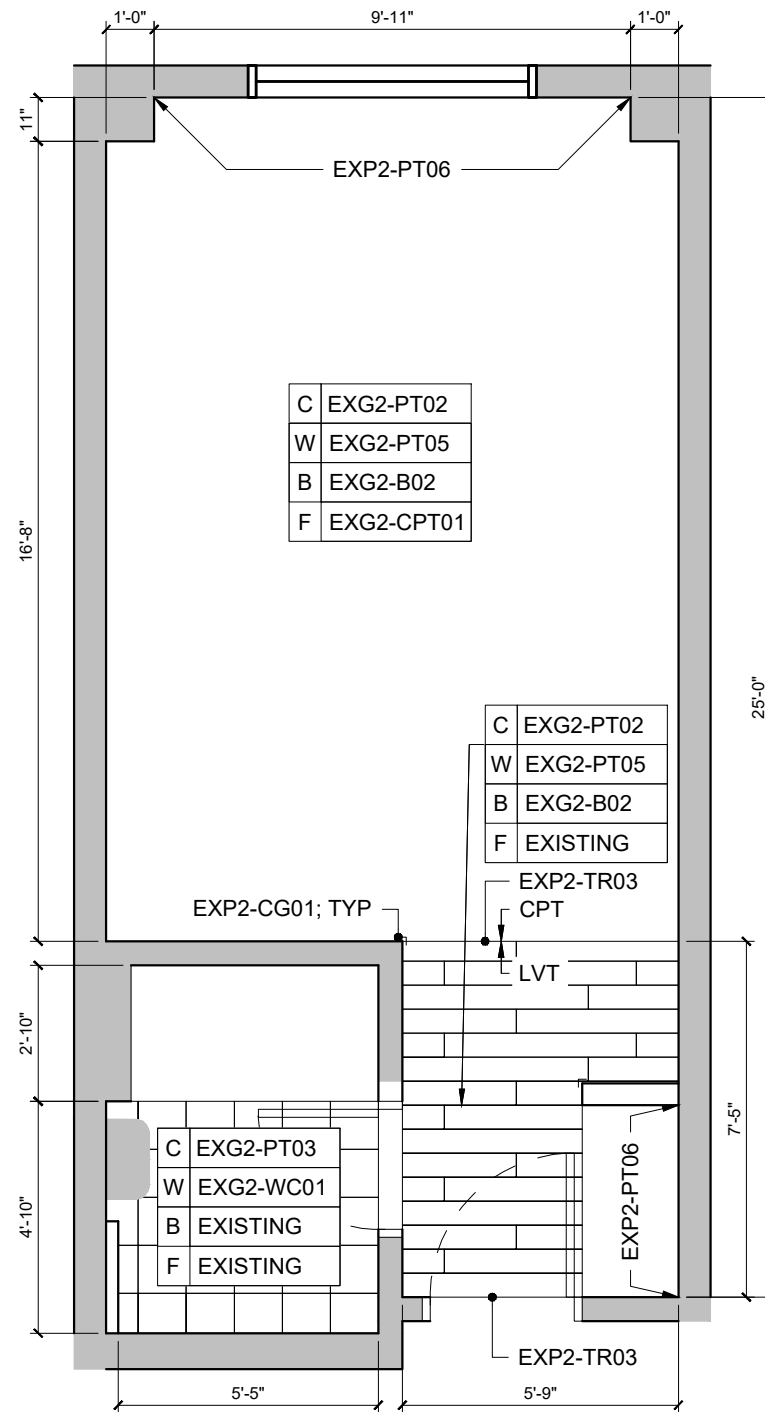
SHEET TITLE:
 ENLARGED GUESTROOM
 KING CONVERSION (J)

SHEET NO.:
 ID4.07
 PHASE:
 BRAND SUBMITTAL



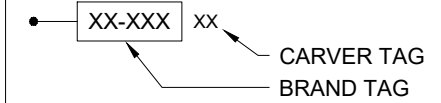
01 FURNITURE PLAN: Q/Q - F
SCALE: 1/4" = 1' - 0"

RIGHT HAND SHOWN;
LEFT HAND OPPOSITE



02 FINISH PLAN: Q/Q - F
SCALE: 1/4" = 1' - 0"

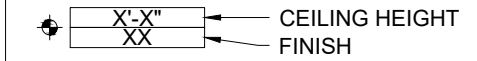
FURNITURE KEY



FINISH KEY

W	WALL
B	BASE
F	FLOOR

REFLECTED CEILING KEY



GENERAL NOTES:

1. REFINISH ENTRY DOOR FRAME TO MATCH: EXP2-PT30
2. REFINISH INTERIOR DOOR FRAMES TO MATCH: EXP2-PT01
3. REPLACE ANY DAMAGED OR DISCOLORED LAMP SHADES WITH EXG2-451.1

ROOM NUMBERS

LEFT-HAND	RIGHT-HAND
116	202
124	206
204	214
208	222
224	302
304	306
308	314
324	322
404	402
408	406
424	414
	422
11 TOTAL	12 TOTAL
23 TOTAL	



CARVER & ASSOCIATES
HOSPITALITY CONTRACT SERVICES
153 WEST ELLIS ROAD
GRIFFIN, GEORGIA 30223
770.233.9799
CARVERASSOC.COM

PROJECT: HOLIDAY INN EXPRESS & SUITES
CHARLOTTE-CONCORD I-85
7772 GATEWAY LANE NW, CONCORD, NC 28027
InnCODE: CNCNC

DRAWN BY: SL

DATE: 03.27.26

REV. 1 DATE: --

REV. 2 DATE: --

REV. 3 DATE: --

REV. 4 DATE: --

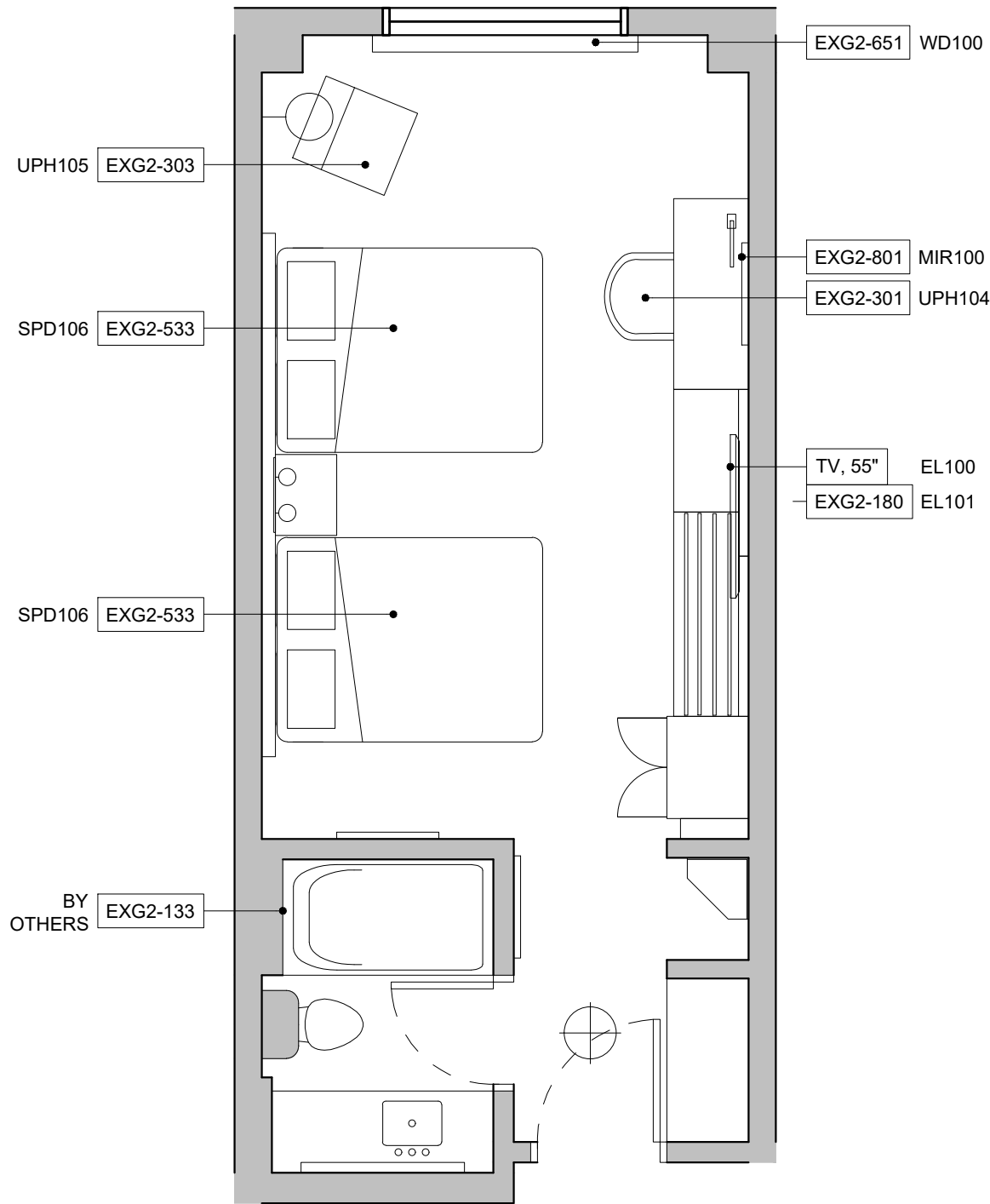
SHEET TITLE:

ENLARGED
GUESTROOM
QUEEN/QUEEN
(F)

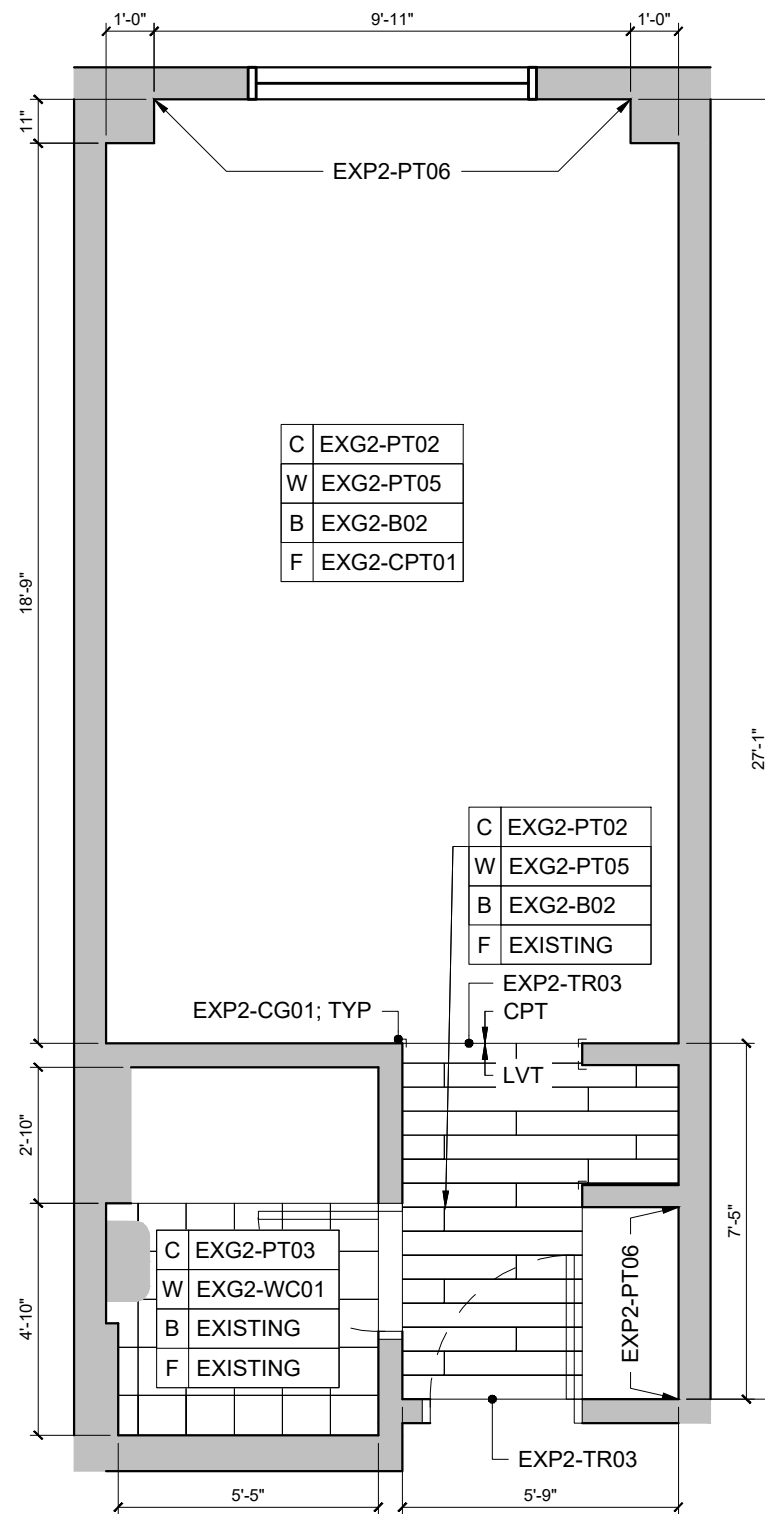
SHEET NO.:

ID4.09

PHASE:
BRAND SUBMITTAL

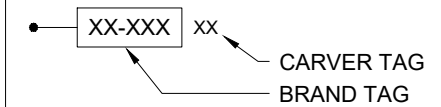


01 FURNITURE PLAN: Q/Q LUX - H
 SCALE: 1/4" = 1' - 0"
 RIGHT HAND SHOWN;
 LEFT HAND OPPOSITE



02 FINISH PLAN: Q/Q LUX - H
 SCALE: 1/4" = 1' - 0"

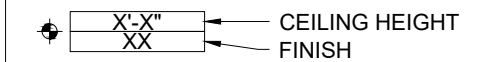
FURNITURE KEY



FINISH KEY

W	WALL
B	BASE
F	FLOOR

REFLECTED CEILING KEY



GENERAL NOTES:

1. REFINISH ENTRY DOOR FRAME TO MATCH: EXP2-PT30
2. REFINISH INTERIOR DOOR FRAMES TO MATCH: EXG2-PT01
3. REPLACE ANY DAMAGED OR DISCOLORED LAMP SHADES WITH EXG2-451.1

ROOM NUMBERS	
LEFT-HAND	RIGHT-HAND
119	121
1 TOTAL	1 TOTAL
2 TOTAL	



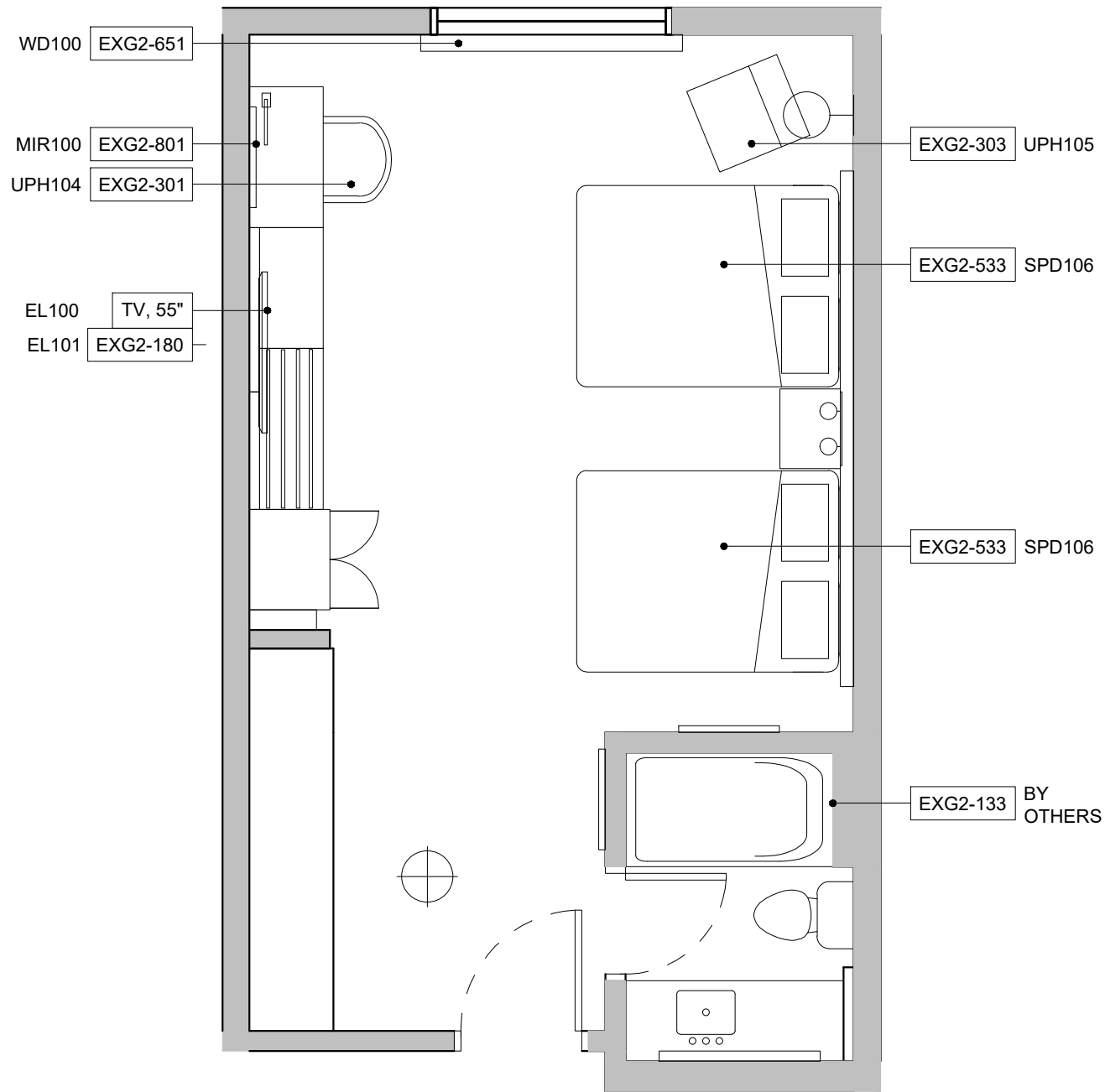
CARVER & ASSOCIATES
 HOSPITALITY CONTRACT SERVICES
 153 WEST ELLIS ROAD
 GRIFFIN, GEORGIA 30223
 770.233.9799
 CARVERASSOC.COM

PROJECT: HOLIDAY INN EXPRESS & SUITES
 CHARLOTTE-CONCORD I-85
 7772 GATEWAY LANE NW, CONCORD, NC 28027
 InnCODE: CNCNC

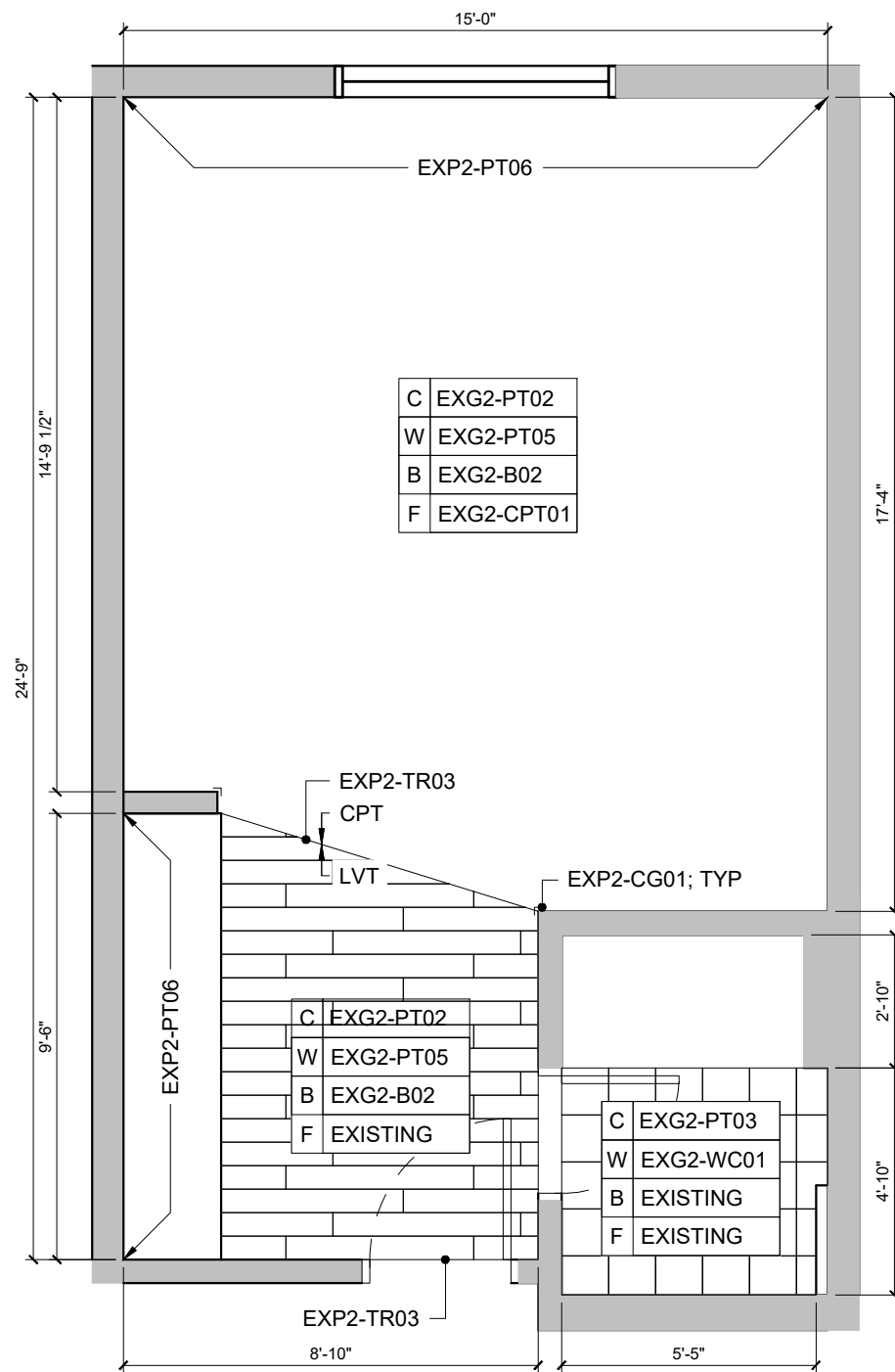
DRAWN BY: SL
 DATE: 03.27.26
 REV. 1 DATE: --
 REV. 2 DATE: --
 REV. 3 DATE: --
 REV. 4 DATE: --
 SHEET TITLE:

ENLARGED GUESTROOM
 QUEEN/QUEEN LUX (H)

SHEET NO.: ID4.10
 PHASE: BRAND SUBMITTAL



01 FURNITURE PLAN: Q/Q KITCH - I
 SCALE: 1/4" = 1' - 0"
 LEFT HAND SHOWN;
 RIGHT HAND OPPOSITE



02 FINISH PLAN: Q/Q KITCH - I
 SCALE: 1/4" = 1' - 0"

FURNITURE KEY

XX-XXX XX
 CARVER TAG
 BRAND TAG

FINISH KEY

W	WALL
B	BASE
F	FLOOR

REFLECTED CEILING KEY

X'-X" CEILING HEIGHT
 XX FINISH

- GENERAL NOTES:**
- REFINISH ENTRY DOOR FRAME TO MATCH: EXP2-PT30
 - REFINISH INTERIOR DOOR FRAMES TO MATCH: EXP2-PT01
 - REPLACE ANY DAMAGED OR DISCOLORED LAMP SHADES WITH EXG2-451.1

ROOM NUMBERS

LEFT-HAND	RIGHT-HAND
200	-
300	-
400	-
3 TOTAL	0 TOTAL
3 TOTAL	



CARVER & ASSOCIATES
 HOSPITALITY CONTRACT SERVICES
 153 WEST ELLIS ROAD
 GRIFFIN, GEORGIA 30223
 770.233.9799
 CARVERASSOC.COM

PROJECT:
 HOLIDAY INN EXPRESS
 & SUITES
 CHARLOTTE-CONCORD I-85
 7772 GATEWAY LANE NW, CONCORD, NC 28027
 InnCODE: CNCNC

DRAWN BY: SL
DATE: 03.27.26
REV. 1 DATE: --
REV. 2 DATE: --
REV. 3 DATE: --
REV. 4 DATE: --

SHEET TITLE:
 ENLARGED
 GUESTROOM
 QUEEN/QUEEN
 KITCHENETTE
 (I)

SHEET NO.:
 ID4.11
PHASE:
 BRAND SUBMITTAL



CARVER & ASSOCIATES
 HOSPITALITY CONTRACT SERVICES
 153 WEST ELLIS ROAD
 GRIFFIN, GEORGIA 30223
 770.233.9799
 CARVERASSOC.COM

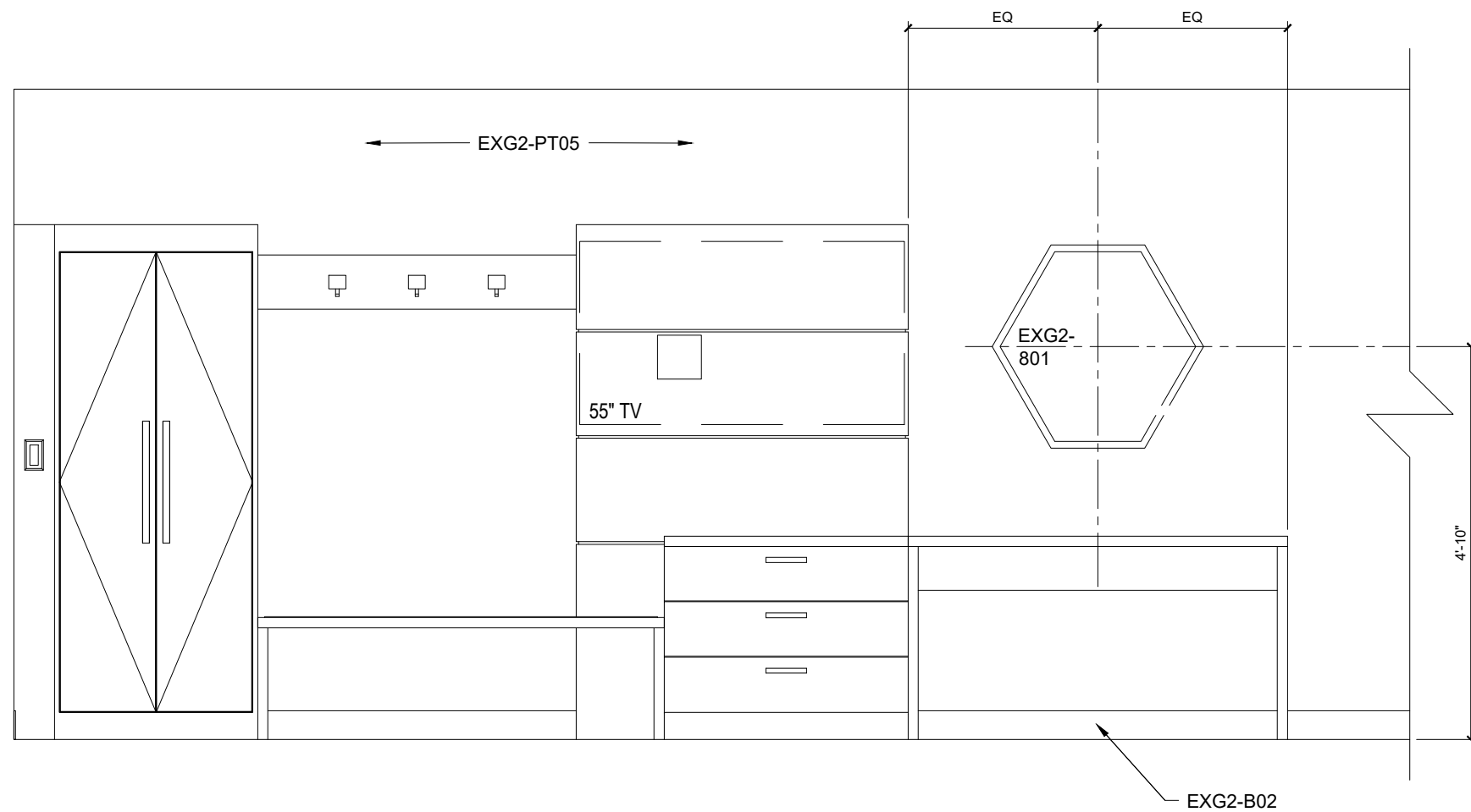
PROJECT:
**HOLIDAY INN EXPRESS
 & SUITES**
CHARLOTTE-CONCORD I-85
 7772 GATEWAY LANE NW., CONCORD, NC 28027
 InnCODE: CNCNC

DRAWN BY:	SL
DATE:	03.27.26
REV. 1 DATE:	--
REV. 2 DATE:	--
REV. 3 DATE:	--
REV. 4 DATE:	--

SHEET TITLE:
**ELEVATIONS
 GUESTROOM**

SHEET NO.:
ID5.01

PHASE:
 BRAND SUBMITTAL



01 WORKING WALL ELEVATION
 SCALE: 1/2" = 1' - 0"